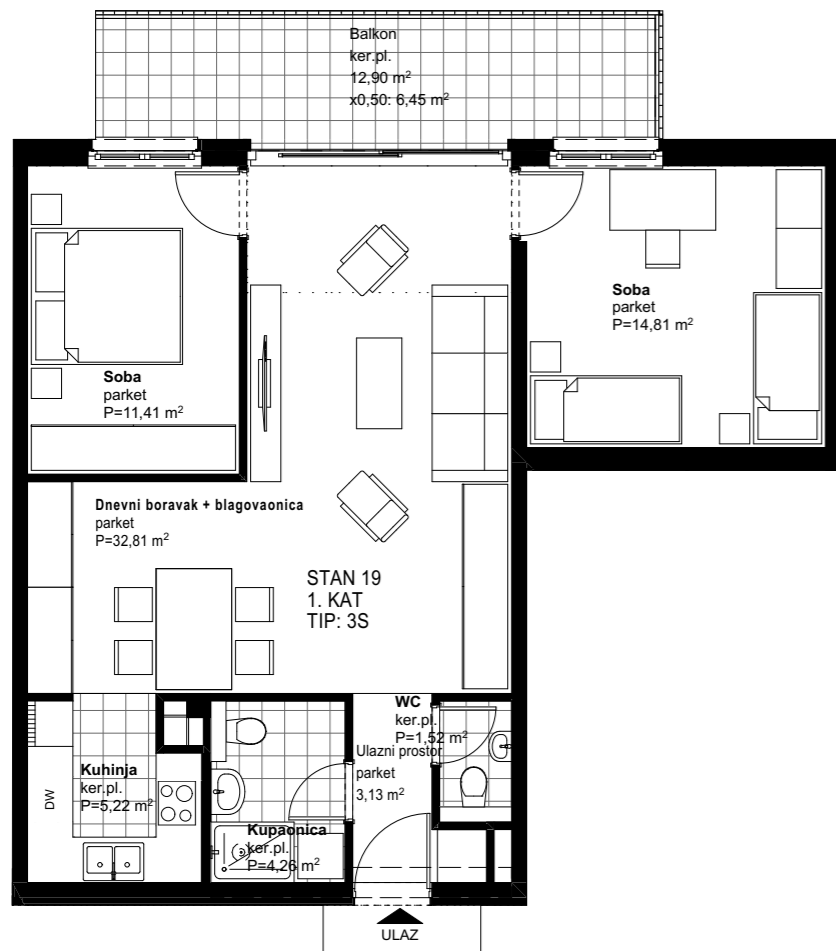




1.KAT



ZAPADNO PROČELJE



Prostorija	Površina
Ulazni prostor	3,13
Kupaonica	4,26
Kuhinja	5,22
Dnevni boravak + blagovaonica	32,81
Soba	11,41
Soba	14,81
WC	1,52
Balkon	6,45
	<b>79,61 m<sup>2</sup></b>
Spremište S19	0,99
Parkirno mjesto - G30	7,50
Parkirno mjesto - P13	3,12
	<b>11,61 m<sup>2</sup></b>
	<b>91,22 m<sup>2</sup></b>

